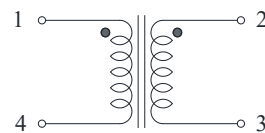
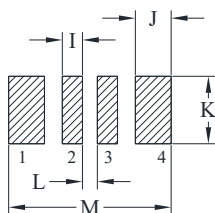
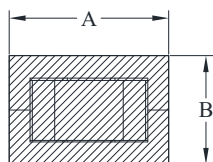


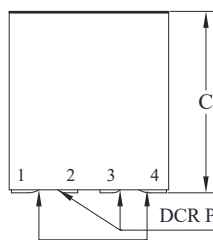


DELTA P/N: TLM117513F Series

Mechanical Dimensions & Schematic

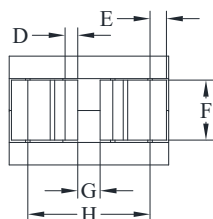


Schematic



DCR PIN 1-4 Measure Points

DCR PIN 2-3 Measure Points



Suggested PWB Layout

- UNIT : mm
 A = 11.0 MAX
 B = 7.5 MAX
 C = 12.7 MAX
 D = 0.85
 E = 1.1
 F = 4.0
 G = 1.5
 H = 8.2
 I = 1.35
 J = 2.4
 K = 4.5
 L = 1.0
 M = 10.9



Electrical Characteristics @ 25°C, 100kHz, 1V

| Delta P/N | L (nH) ± 15% | Li (nH) MIN | DCR (mΩ) ± 10% | | Isat ¹ (A) | | | Ir ² (A) | Ir ² (A) |
|----------------|--------------------|-------------------|----------------------|------|--------------------------|-------|-------|------------------------|------------------------|
| | | | 1-4 | 2-3 | 25°C | 100°C | 125°C | 1-4 | 2-3 |
| TLM117513F-900 | 90 | 63 | 0.105 | 0.27 | 145 | 123 | 116 | 80 | 50 |
| TLM117513F-121 | 120 | 84 | | | 106 | 90 | 85 | | |
| TLM117513F-131 | 130 | 91 | | | 98 | 83 | 78 | | |
| TLM117513F-151 | 150 | 105 | | | 82 | 70 | 66 | | |

1. Isat is the DC current which causes the inductance drop to Li.
2. Ir is the DC current which causes the surface temperature of the part increase approximately 40 °C.
3. Operating temperature: -40°C to 125°C (Self-temperature rise included).